



60 Williamsons Road
South Morang VIC 3752
Subscribe: <https://marymedecc.schoolzineplus.com/subscribe>

Email: principal@marymede.vic.edu.au
Phone: 03 9407 9000
Fax: 03 9407 9010



14 May 2020

FROM THE PRINCIPAL

May is traditionally the month dedicated by the Church to Mary and as this is the first newsletter in May I wanted to share with you a few of my thoughts on Mary our Blessed Mother.

Through the Gospels, we come to know of Mary, of her love of God and her desire to do his will in accepting to become the Mother of Jesus our Saviour. She was a strong woman who had faith in what God wanted of her; a perfect example of motherhood and the first of the disciples of Jesus.

I encourage all members of our Marymede Community to ask Mary to intercede when we find ourselves in need of consolation and to follow her example of trust and love of God.

COVID - 19

As week five of Home Learning draws to a close I want to say thank you to our parents for all that you are doing to support us in the work we are continuing to do with your sons and daughters. You have become teachers, problem solvers and working from home coordinators and we are all aware of how difficult the juggling requirements have been. I am proud of our students and how they are managing online remote learning. I also acknowledge our staff who have provided great support to our students in these uncertain times.

Further to Victorian Premier Dan Andrews' press conference last Tuesday, an outline for the students' return to school was clarified. I ask parents/guardians to please note the following timeline for students to return to Marymede:

Monday 25 May: Student Free Day (all staff to return to school)

Tuesday 26 May: Classes resume for Prep-2 and Years 11 and 12

Tuesday 9 June: Classes resume for Years 3-10

I would like to remind the students that upon their return to school, they are to ensure they are meeting the grooming requirements and as such are expected to be in the full winter

uniform. I ask students to also please ensure that the blazer is worn to and from school and to Tutor Group each day. The jumper must never be worn as the outer garment.



Capital Development Projects

Our new Material & Digital Technology Centre is now ready for students to use when they return to school. I am very excited about this new state-of-the-art centre and know that our students are going to enjoy working in this building.

We have recently erected lights over our soccer field. This will provide both our College and local community clubs with exciting new opportunities once the coronavirus has ended.

Prep 2021 Enrolment Applications

A reminder that Prep enrolment applications close on Friday week, 22 May at 4.00pm.

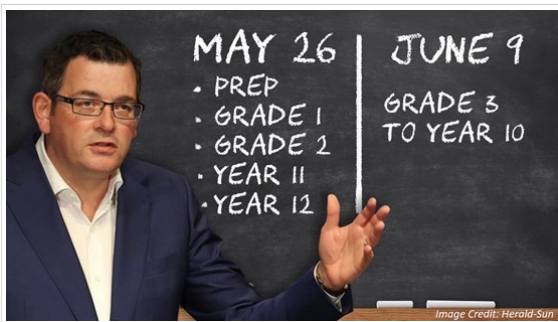
We again anticipate very strong demand for places.

Mr. Michael Kenny
Principal

DEPUTY PRINCIPAL STAFF AND OPERATIONS PREP – YEAR 12

A 'Gradual, Staged Return' But Until Then 'If You Can Learn From Home, You MUST Learn From Home'

It was most gratifying to hear Premier Daniel Andrews and Education Minister James Merlino announce on 12 May the timetable for the 'gradual, staged return' of students to occur prior to the end of Term 2, and we look forward to welcoming each year level on the nominated dates, as listed below.



While further communication regarding the return(s) will be emailed directly to families, until the nominated time for each student's return to 'face-to-face learning' both Premier Andrews and Chief Health Officer Brett Sutton reiterated that the only students on campus should be young children (mostly Primary school aged) who cannot care for themselves and who do not have an adult in the house to supervise them. We do not expect students from Year 9 and above to be on-campus prior to their official return except in truly exceptional circumstances that prevent them from engaging in their Home Learning Program at their own house. Further communication regarding special allowances for Year 10 students studying a VCE subject will be communicated shortly.

As required via government instruction, parents with students on-campus (or requesting to send their child) prior to the student's nominated year-level return are required by Friday of each week to fill in a form with the following details prior to their child being permitted on-campus to be supervised the following week:

- Verify that your child is in perfect health
- Explain which category of essential worker or vulnerable situation prevents your child from engaging in their Home Learning Program at home
- Verify that no-one in your residence has had close contact with a confirmed case of COVID-19 in the last 14 days
- Verify that no-one in your residence has been in self-isolation in the past 14 days (*i.e. beyond the 'social distancing' requirements*)

If you have not already received a copy of the survey and meet the conditions for your child conducting their Home Learning on-campus, please email absentees@marymede.vic.edu.au to request the link to the 'On-campus attendance form'. Students whose parents fail to fill in the survey will not be accepted on-campus.

Please note that most of the adults engaged in supervision on-campus are not teachers: most of the teachers are off-campus and are actively engaged in conducting and preparing Home Learning programs until 25 May, and thereafter conducting a blend of live and Home Learning classes on-campus. Students will not be supervised by their own teachers and no active teaching nor assistance is provided on-campus except in some exceptional cases for a small number of students who are already on a Personalised Learning Program. Students on-campus will be engaged in the exact same Home Learning Program as students learning from home.

On Being 'Cautious, Safe and Appropriate': Home Learning Program & Limited access to campus

Premier Daniel Andrews' 11 May press conference announced an extension of the "if you can work from home you must work from home" restrictions through to 31 May. At the time of writing, the premier's advice is that we continue to take 'cautious, safe and appropriate' measures to safeguard the health of our community. This means a continued focus on Home Learning Program (until the dates shown above) and limiting the access of both students and parents on-campus.

For students undertaking Home Learning, limited access to tubs / lockers is available if a student requires additional learning resources that are at school.

Secondary students may gain access to their locker during the normal periods 1, 4 & 5 times by visiting main reception. Only the student will be permitted on-campus. In keeping with social distancing requirements, only one set of siblings or two students will be permitted at a time. Please note that students may be required to wait outside reception until a previous set of students has exited.

Primary parents will generally be unable to access their child's tub / locker unless your child's teacher has specifically requested retrieval of resources. In this case, the staff member will negotiate personally meeting the individual parent outside the Finance office and escorting them to the classroom/locker. If there is a need across a year-level to have parents retrieve resources, then parents will be contacted to book a time to either collect resources from Main Reception or for teachers meet parents outside the Finance office to escort them into the class/locker bay in groups of no more than 2 parents at a time.



Restricted Entry & Procedures for Students On-campus

Under the continuing advice of the Chief Health Officer, parents and community members are advised that entry and exit points to the campus continue to be limited as a further measure for protecting the health of our staff and students. This is likely to continue until at least the end of Term 2 (including after the return of all students on 9 June).

Parents will not be permitted to drive in through the usual Gate E or F entrances. Secondary students must be dropped off outside the College grounds and enter via the pedestrian gate near the Chapel. Up to 22 May, Primary school parents may park in the Primary carpark and must accompany their child to the College gate near the Finance Office to sign them in each day (a different procedure will be communicated via email for 25 May onwards). During morning arrival and afternoon pick-up, only the following gates will be open:

- Gate D – pedestrian access only (near the Chapel)
- Gate C – pedestrian access only
- Gate B – primary school car-parking only. Pedestrian access for Primary students and parental sign-in is via the gate near the Finance Office.

For the small number of students who will be on-campus for Home Learning, all Primary school parents must personally accompany their children to the gate near the Finance Office each day for sign-in. Secondary students on-campus for Home Learning are also to report for sign in outside House 1 upon arrival each day. Up to 22 May, secondary students who are invited on-campus for specific practical classes will have their temperature taken and conduct sign-in at the Founders' Building.

Uniform Shop

With the imminent return of students, parents are advised to please check the condition and size of your child(ren)'s Winter Uniform. The Uniform Shop will be made available on a bookings-only basis in the week prior to the return of each student's year level. Details for booking a time to access the Uniform Shop will be emailed to families, with the bookings to be made via the PAM Parent Teacher Bookings tab.

Mr David Broadbent
Deputy Principal Staff & Operations P-12

DEPUTY PRINCIPAL LEARNING AND TEACHING PREP – YEAR 12

Onsite Learning

It has been wonderful to see some of our senior students on campus for selected practical studies. The students I spoke to were feeling happy to be onsite and excited to get back into the classroom. For some of these students the practical aspect of the subject is what they love most so it has been missed whilst in Home Learning. Our students have been very responsive to the measures we have in place to keep them and others safe and they seem very accustomed to social distancing at this point. We had students in for Visual Arts,

Performing Arts, Technologies, Science and VET and these sessions will continue during the period of Home Learning. Here are some of our Year 10 Food Studies students cooking:



Parent Teacher Interviews

My thanks to teachers and parents for their time and the way in which everyone engaged with the alternative format for parent teacher interviews. Reports from staff were that they thought the process went well and were an effective means of discussing student progress. These discussions always provide an opportunity to reflect on what's happened over the last term and develop proactive strategies to best support student learning growth moving forward.

Reporting

The end of the semester for students in year 7-12 has been extended to the end of term, therefore all Semester 2 subjects will not commence until the start of Term 3. This decision has been made in line with the VCAA recommendations for VCE studies and will allow for the learning period to be extended. Given this change to the timeline and our current operations in the Home Learning environment, Semester 1 reports for all students in P-12 will be released on Friday 24 July. Further information regarding the structure of these reports will be communicated to parents prior to their release.

Mrs Jessica Hall
Deputy Principal Learning & Teaching P-12

STUDENT LIFE

Primary Student Wellbeing

We are now in the 5th week of Remote Learning at Marymede. The Primary Wellbeing Team has shared several wellbeing initiatives with students and their families through Seesaw. It is our intention to support everyone whilst learning at home and to assist with maintaining their wellbeing in simple and effective ways.

Start Up & Marymede Shout Outs

This support commenced with START up TERM 2 and students' responses were collated and shared with the community through an online clip via Seesaw. Students sent positive 'shout outs' to their teachers and families through artwork online and on the footpaths of surrounding suburbs for all to see. Marymede teachers were very moved when they saw their students' responses.





Co-Curriculum @ Home!



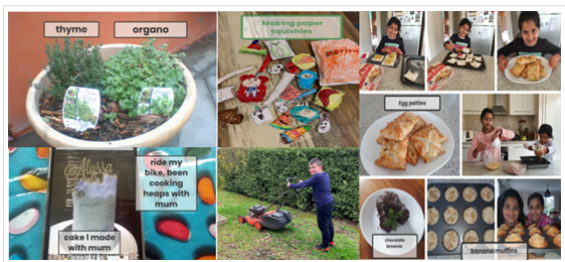
It has been wonderful to see the enthusiastic participation in the P-12 Co-curricular @ Home program. The Primary students have been particularly proactive, and it's made for a very close competition!

A reminder that every Monday (up to 1 June), we will publish the "Co-Curriculum @ Home" program which contains a variety of new activities. Students in 7-12 receive this via email, and it is also emailed to all P-12 families and posted on our website. If you haven't had the opportunity to look over this week's program, you can find it attached. We hope your child enjoys this opportunity to try something new, upskill or enjoy a brain break.

Ms Angie Bedford
Cultural Co-Curricular Coordinator P-12

Real Life Learning Occurring At Home!

Families were also asked to share the new learning that has occurred outside of the school curriculum. It is wonderful to see students embracing new skills such as cooking, gardening, riding bikes, solving complicated puzzles and tying their shoelaces! So much positive lifelong learning is occurring, despite our present challenges.



mindfulmay@marymede is the next focus.

What is MINDFULNESS?

Mindfulness is paying attention to what's happening right now, moment by moment. It can boost emotional and physical wellbeing, and help with stress, anxiety and depression. Mindfulness can help children handle the stress of study, work and play as they get older.



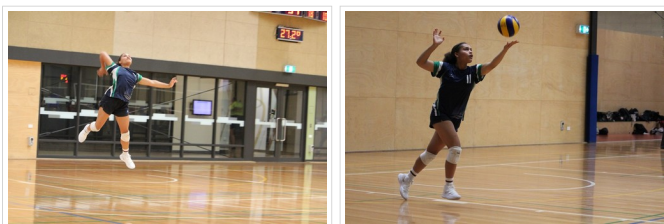
<https://raisingchildren.net.au/>

Keep an eye out on Seesaw for tasks that will assist the students incorporate mindful activities into their day. You may like to create a family routine that includes these to help everyone manage their wellbeing during Remote Learning.

Ms Lisa Murray
LEC Coordinator P-6

Volleyball

The year 10 girls' volleyball team finished on top of the ladder and therefore won the competition due to the finals being called off. Here are some photos of Shante, as well as their team photo from last year's Grand Final.



Miss Bridgette Taylor- Gray
Sports Assistant

PATHWAYS

Careers

This update contains Information on the following:

- VCE & Beyond – Virtual Careers Expo – 10 -14 June
- Law Week 18-24 May
- Melbourne University Webinars
- Stream Swinburne Series
- Monash Information Evenings
- Booking Careers Appointment

VCE & Beyond - Virtual Careers Expo 10 June – 14 June (Yr 10-12)

In partnership with leading universities and higher education providers, students and parents will be able to:

- Live chat with major Victorian universities and Higher Education providers.
- Schedule an appointment with a university advisor or ambassador.
- Participate in live Q&A sessions with expert VCE teachers, careers advisors and counsellors.
- Participate in exclusive webinars, view recordings, and download resources to help ACE the VCE across all major subjects.

Registration is FREE to all students, parents, and schools and will provide access to all of the event features across all days.

<https://inspired.edu.au/vcebeyond/>

Dates and Times

- Wednesday 10th June - 9:30am-2:30pm
- Thursday 11th June - 9:30am-8pm
- Friday 12th June - 9:30am-2:30pm
- Saturday 13th June - 10am-2pm
- Sunday 14th June - 10am-2pm

Law Week 2020

LAWWEEK
18-24 MAY 2020

Presented by
Victorian Law
Foundation

There's something for everyone during Law Week this year! **Law Week** is an annual festival of events which makes learning about the law easy. This year Law Week will look different to last year, but it is going ahead, nonetheless. With webinars, interviews, information sessions, free legal advice, podcasts and plenty more, Law Week makes learning about the law easy for all Victorians. This year, Law Week will take place from **Monday 18 - Sunday 24 May 2020**.

Check out the Law Week program at [Law Week 2020](#)

Meet Melbourne Webinars



The University of Melbourne will be hosting a series of **live webinars** in May. Most of these will be run by the various faculties of the university. **All the webinars will take place from 6.00pm – 6.45pm**. After registering participants will have access to all of the Meet **Melbourne 2020** webinar recordings after the events.

Tuesday 5 May	Agriculture and food sciences (B.Ag)
Wednesday 6 May	Health (B.Biomed, B.Oral Health, and graduate health sciences)
Thursday 7 May	Law
Tuesday 12 May	Architecture, building, planning and design (B.Des)
Wednesday 13 May	Science (B.Sci)
Thursday 14 May	Engineering
Tuesday 19 May	Visual and performing arts (BFA)
Wednesday 20 May	Music (B.Mus)
Thursday 21 May	Education
Monday 25 May	Veterinary medicine
Tuesday 26 May	Arts, humanities, and social sciences (BA)
Wednesday 27 May	Commerce (B.Com)
Thursday 28 May	Information technology and computer science

Register for one or more of these webinars at [Meet Melbourne](#)

Stream Swinburne Series



Over the next few weeks, Swinburne will be releasing a series of weekly streams featuring its

student ambassadors for Year 12 students. The **Swinburne Stream Series** will feature different kinds of content, with some editions focused on course information and others focused on Swinburne student life and how to prepare for 2021 given this year's unique circumstances. **All the broadcasts will commence at 4.00pm** on the dates listed below.

Broadcast Date	Episode	Link to Broadcast/ Recording
Wed 13 May	Study Law	https://swinburne.zoom.us/j/92599077506
Wed 20 May	Study Computer Science	https://swinburne.zoom.us/j/91334238871
Thurs 21 May	Pathways / Uni Link at Swinburne	https://swinburne.zoom.us/j/95753905842
Wed 28 May	Study Industrial Design	https://swinburne.zoom.us/j/91422632548
Wed 3 June	Study Allied Health	https://swinburne.zoom.us/j/97827706093
Thurs 4 June	Reclaim Your Year 12 – tips from our students	https://swinburne.zoom.us/j/92884122798
Wed 10 June	Study Engineering	https://swinburne.zoom.us/j/99084934101
Thurs 11 June	Scholarships 2021	https://swinburne.zoom.us/j/99048282595
Wed 24 June	Study Business	https://swinburne.zoom.us/j/94213785292
Thurs 25 June	Advice for regional and rural students	https://swinburne.zoom.us/j/99677763640

Monash Information Evening



Monash will be hosting two **Information Evening Webinars** in May and participants can register for either. Broad topics to be covered include –

- Monash courses
- How to apply and access schemes
- Student life
- Accommodation options

Register for Tuesday 26 May, 6.30 – 8.00pm AEST here OR Wednesday 27 May, 6.30 – 8.00pm AEST here.

Inside Monash Webinars

The **Inside Monash webinars** are faculty and course specific and participants can register for as many as interest them. Many of the webinars will take place from 6.30pm – 8.00pm AEST but please check the times when registering.

Wednesday 13 May	Media and Communication
	Pharmacy & Pharmaceutical Sciences
Thursday 14 May	Engineering
Tuesday 19 May	Design

Wednesday 20 May	Politics, Philosophy, and Economics
	Fine Arts
Thursday 21 May	Architecture
Tuesday 26 May	Global Studies and Arts
Tuesday 2 June	Criminology
Thursday 11 June	Law
	Science

Further webinars will take place later in the year and details will be provided once they are available. Register for these webinars at Inside Monash Webinars

Booking Careers Appointment

If you would like to book a Careers Interview with your daughter/son you are encouraged to book an appointment via the Careers website. The appointment will be conducted via phone or video conference.



Ms Stavroula Tsembas
Head of Careers

COMMUNITY MASS

