



MARYMEDE
CATHOLIC COLLEGE
— *In the way of Mary* —

OPEN DAY 2023

Sunday 19 March

11.00am - 2.00pm

UPCOMING INFORMATION EVENINGS

Prep Information Evening - Tuesday 4 April, 7.00pm

Fitness Centre, 60 Williamsons Road, South Morang



Year 7 Information Evening - Tuesday 9 May, 7.00pm

Fitness Centre, 60 Williamsons Road, South Morang



Join us and hear about our:

- Learning programs
- Enrolment process
- New Doreen Campus
(Year 7 Information Evening)

**To attend, please
register online**



Applications are currently open for:

- Prep 2024, South Morang (applications close 31 May 2023)
- Year 7 2024 and 2025, Doreen and South Morang (applications close 18 August 2023)
- A small number of places at various year levels in 2023 and 2024

For more information please contact Yvonne Smith, Student Enrolment Coordinator:

E: registrar@marymede.vic.edu.au or **T:** 9407 9000

OPEN DAY 2023

WHAT'S ON TODAY?

11.00am - FACILITIES OPEN & TOURS COMMENCE

Student guides leading tours of either the Primary or Secondary School areas from 11.00am onward, with the last guided tour commencing at 1.15pm.

The Marymede Early Learning Centre is Open from 11.00am-2.00pm and welcomes visitors.

11.00am - 2.00pm Wurun Common

Throughout the day, Wurun Common will host a variety of activities:

- Free BBQ and Picnic area manned by volunteers from our Marymede Parents & Friends Association
- Pastoral Care and House display
- Co-curricular Activities display
- Learning and Diversity display
- St Mary's School for the Deaf display
- Live Music by students in our VET and Instrumental music programs
- Ice cream Truck in Founders car park
- Free Face painting

Principal's Address - Level 1 Performing Arts Centre 11.45am and 1.15pm

College Principal Timothy Newcomb will present an address to guests in the Performing Arts Centre PA102. Joining Timothy will be Julie Plymin, Deputy Principal - Head of Campus Doreen, who has already commenced in her new role in 2023 as part of the College's commitment to realising the vision for the new campus.

Listen out for announcements - we will let you know when an address is about to begin.

College Q&A /Enrolment Enquiries - next to the Chapel

Chat with staff and members of the College Leadership Team to learn more about the College's programs, facilities, and educational approach.

Our Enrolment staff will also be on hand to discuss any questions you may have about our application or enrolment processes.

A display of the College Uniform is available for visitors to see.



Doreen Campus Information - next to the Chapel

Our new Year 7-12 Marymede Catholic College Doreen campus will open in 2024 and aims to provide high-quality, Catholic and accessible secondary co-education option for families, in Melbourne's north-east.

The new Doreen Campus will welcome students from all faith and cultural backgrounds who are supportive of the ethos of the College. The site is set on an expansive seven-hectare site and will provide state-of-the-art facilities.

The campus will offer a comprehensive curriculum and differentiated learning programs, coupled with an extensive co-curricular program catering for the interests and talents of students, to ensure academic success and positive wellbeing outcomes for all students.

Facilities will include:

2024

- Junior A building:
 - Campus Reception
 - Digital Technology
 - Food Technology
 - General purpose classrooms
 - Drama, Media Arts and Music
 - Product Design: wood
 - Science and STEM
 - Textiles and Visual Arts
 - Wellbeing
- Hockey/Soccer pitch

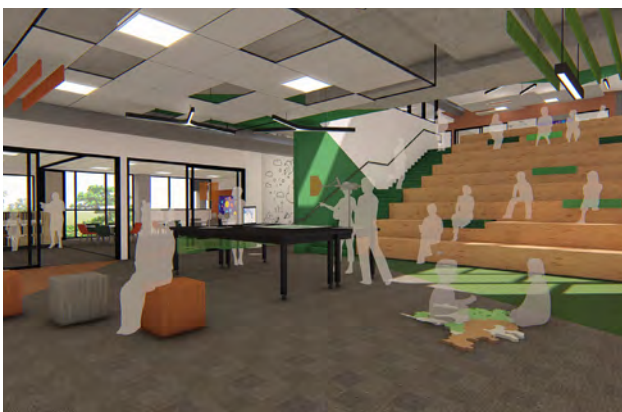
2025

- Fitness Centre:
 - Double internal basketball court
 - Change rooms
 - Adjacent Performing Arts rooms
 - Food Technology rooms
- Additional outside courts

**NOW TAKING
APPLICATIONS FOR
DOREEN**



APPLY NOW



FACILITIES OPEN

1. EARLY LEARNING CENTRE

Marymede Early Learning Centre offers a Kindergarten program for 3 and 4 year old children located on the grounds of Marymede Catholic College. The ELC strives to provide all children with an enjoyable and enriching Kindergarten education in a dynamic, nurturing and safe environment.

Through partnership with Marymede Catholic College, the Centre aims to enhance and expand the opportunities and resources available to each child enrolled whilst ensuring an ideal transition into Primary School; supporting children to be independent thinkers, socially confident, and excited to learn. The ELC does not offer long day care centre services.



2. CHAPEL OF THE ANNUNCIATION / STUDENT WELLBEING



The 'Chapel of the Annunciation', constructed in 2009, is a significant building which is regularly used for Masses, Sacramental workshops, Staff Prayer and other liturgies. As the 'heart' of the College, it plays an integral role in the Catholic Identity of Marymede. Religious Education classes are compulsory through to Year 12. We have House masses and special liturgies in our Chapel. Our Primary students participate in Sacramental workshops in the Chapel.

In the rooms off the foyer of the Chapel you will find our Student Wellbeing Centre. Our students and their families are supported by a specialist team of psychologists and counsellors.

DISPLAYS

- Religious Education (Main Chapel space)
- Counselling Team (Wellbeing Centre)

3. CALTHORPE RESOURCE CENTRE

Named after Sr. Beth Calthorpe, a past President of the Association of Delegated Canonical Administrators, our Resource Centre provides a welcoming hub of information and learning resources. The Calthorpe Resource Centre is open to all students before school and until 4.30pm every afternoon. It is also open to Marymede students during term holidays, allowing them to access the latest digital and other resources for 21st Century learning.

The Resource Centre is also open during recess and lunch. Students have access to a range of different resources and computers.

All students from Year 5 – 12 receive their own laptop which they can take home each day. There are IT devices in lower primary classes, however the device remains at the College. Devices are provided by the College and are covered in annual fees.

DISPLAYS

- Resource Centre Open
- Chat to our Teacher Librarians



4. FITNESS CENTRE

Shared by both Primary and Secondary students, our Fitness Centre consists of two full sized Basketball/ Multipurpose Courts, two general purpose Physical Education classrooms and a fully equipped Gym. Students use this space for their timetabled P.E classes and many sporting events which occur throughout the year. Physical Education classes, co-curricular sporting activities, sporting teams and development squads along with our High Performance Academy all occur in the Fitness Centre. It is also used for whole school assemblies / masses.

DISPLAYS & ACTIVITIES

- Gymnastics activities and Fitness testing



5. PERFORMING ARTS / MUSIC / AUDITORIUM

We have recently completed the expansion of the purpose-built Performing Arts Centre, with dedicated classrooms and performance spaces to expand our already thriving Performing Arts program.

Our Performing Arts Auditorium provides the perfect hub for Performing Arts and Music related activities and classes. Our theatre is used for Drama classes, special events and the Co-curricular Program, whilst our Instrumental Music classrooms have state of the art technology and equipment which affords all students the opportunity to immerse themselves in a world of music. View our co-curricular display while you are here!

Our Co-curricular Program includes College musicals, plays and ensemble evenings. Our previous musicals have included *Moana Junior*, *High School Musical*, *The Lion King Junior*, *Fame* and *Annie*. This year our senior years production is *The Little Mermaid*.

Music, Dance and Drama classes occur from Prep through to Year 12. We also offer private instrumental music lessons.

Don't miss out on the live music in Wurun Common today! See below for more information.

DISPLAYS & ACTIVITIES

PA001/PA002 (Ground Floor)

Performing Arts

Displays

- Shadow puppet demonstrations/booth
- Displays and Videos of student work and performances
- Drama props and costumes

Demonstrations. All welcome

- 11.20am-11.40am Dance workshop
- 12.00pm-12.20pm Guitar workshop/lesson
- 12.40pm-1.00pm Dance workshop
- 1.20pm-1.40pm Guitar workshop/lesson

Live Music (outside Founders Building)

James Champlin, Paul Roflo, Giselle Castelo, Nerissa Diaz and Aleksey Trivailo (VET Music Students)

- | | |
|--------------------|------------------|
| • 11.00am-11.20am: | • 1.00pm-1.20pm: |
| • 11.40-12.00pm: | • 1.40pm-2.00pm: |
| • 12.20pm-12.40pm: | |



Auditorium

- Screening of past Marymede Productions and Marymede's got Talent

PA101/102 - (1st Floor)

Principals Address

- 11.45am and 1.15pm: College Principal Timothy Newcomb

6. SECONDARY SPECIALIST CENTRE

The Secondary Specialist Centre contains state-of-the-art technology throughout and comprises of three Visual Art labs, one IT/Media lab, two Science labs, two general purpose classrooms, a green-screen room and one Music theory classroom.

DISPLAYS & ACTIVITIES

SS01, SS02 and SS03

Visual Art

- Media and photography screening
- Art displays

7. VCE WING

The VCE Wing is used for Secondary School classes and special events, comprising of ten general purpose classrooms and one Media lab. All classrooms have heating and cooling, wireless internet and digital projectors.

OPEN DAY DISPLAYS & ACTIVITIES

Lower VCE Building

Humanities

- Logo quiz
- Chronology quiz
- Geo lego
- Student work display

English

- Guess the book cover
- Take a photo inside a book
- English pathway display

Maths

- Maths games
- Maths pathway display

Upper VCE Building extension (VC116 – VC119)

Languages

- Bocce
- Music
- Card games

- Origami
- Japanese calligraphy



8. OUTDOOR SPORTING FACILITIES

Sport plays a major role in the life of our College. Marymede students from Prep to Year 12 make use of state-of-the-art sporting facilities which include our two ovals, cricket nets/pitch, basketball rings and backboards, our synthetic turf Soccer Pitch and external basketball/multi-purpose courts. Athletics carnivals for our College are held on our sporting fields.



9. TRADE SKILLS CENTRE

Opened in 2016, our Trade Skills Centre boasts industry-specific machinery allowing students to expand their skill set within the Building Construction/Carpentry, Furniture Making and Metal Engineering industries and commence training toward industry pathways post-Secondary School. Students study Woodwork in Year 6 onwards.

We offer classes in Carpentry, Building Design and Engineering. It's a state-of-the-art space for anyone wanting to obtain a trade qualification upon finishing school.

VET Certificates offered on campus at Marymede Catholic College are:

- Cert II VET Engineering 22470VIC
- CERT II Building and Construction Carpentry 22338VIC
- Cert III Sport and Recreation SIS30115
- Cert III Allied Health Assistance HLT33015
- 1st Year Cert II Dance CUA20120
- 2nd Year Cert III Dance CUA30120
- Cert III Music – Performance CUA30920

DISPLAYS & ACTIVITIES

- VCE/VET and VCEVM (VCE Vocational Major)
- Product displays
- Mobile phone stand making
- Careers Team

10. MATERIAL AND DIGITAL TECHNOLOGY CENTRE

Our multi million-dollar Material and Digital Technology Centre is less than three years old and is home to a number of specialist classrooms. Our wide range of facilities include a Digital Technologies Hub, Maker-Space, Textiles 'Fab Lab' and Woodwork Workshops. Additional Technology learning spaces can be found in our Science Technology Centre and our Secondary Specialist Centre, including two Food Technology kitchens and six well-equipped Science classrooms as well as multiple Visual Art classrooms.



Students study Design Technology in a number of Materials and forms in their time at the College. Primary students spend time in a Wood Workshop rotation as well as undertaking Innovation in Years 3-6, and from Year 7 they explore Resistant Materials (Wood and Plastics) and Non-Resistant Materials (Fabrics and Soft Circuits). Digital Technology allows students to explore coding and various technologies including robotics, 3D printing, programming and Virtual and Augmented Reality. The Digital Learning space also facilitates cross-curricular use of this equipment to enhance learning experiences.

DISPLAYS & ACTIVITIES

1st Floor

- Interactive VR and Robotics;
- Non Resistant Technologies Display

Ground floor

- Resistant Technology Display

11. PREP HOUSE

Our stand-alone Prep House allows our new Prep students to thrive in their foundation year at Marymede. Each classroom makes use of large interactive whiteboards and outstanding resources, ensuring all students have the opportunity to learn, grow and develop. There are bathrooms within the building.

The Prep House is separate from the Primary courtyard to ensure Preps aren't overwhelmed as they commence school.

ACTIVITIES

Prep

- Discovery Play

Literacy P-3

- Year level displays
- Student work samples

12. HOUSE 2

House 2 is typical of our Primary Houses for each year level. All classrooms have interactive whiteboards, heating and cooling. All Year level houses have a large open space that acts as a flexible learning environment for small group instruction as well as a space for the students and teachers to come together for cohort meetings, such as assemblies. In addition, each House has breakout rooms where curriculum interventions in the areas of literacy and numeracy are held.

Currently, students in Years 1, 2 and 3 make use of the classroom blocks in this area.

Students in P-2 are resourced with an iPad program where sets of iPads are shared across the year level. Year 3-6 are part of the Laptop Device Program. Students in Year 5-6 can take devices home each night, whilst younger students' devices remain at school.

As part of their transition to secondary school, Year 6 our students undertake a 'Rotation' program to introduce specialist subjects on a rotational basis, preparing students for life in secondary school. Students move to different classrooms, as they would in secondary school, to experience subjects including Woodwork and Food Technology.

DISPLAYS & ACTIVITIES

Mathematics

- Maths games

Literacy Years 4-6

- Word games

Inquiry

- STEM equipment on display
- Design Process and STEM activities

Camps

- Displays and information about Primary School camps and activities



13. PRIMARY SCHOOL COURTYARD

Often referred to as the 'central hub' of the Primary School, this courtyard is surrounded by three classroom blocks and our Primary Administration Office. Students enjoy playing here at recess and lunch and a variety of equipment is on offer for children to enjoy.

14. ST MARY'S COLLEGE FOR THE HEARING IMPAIRED

St Mary's College is a registered special school for hearing impaired students in Prep - Year 12. Students have the best of both worlds with the opportunity to learn alongside their hearing peers while being supported by Specialist Teachers of the Deaf. St. Mary's students are fully integrated into all aspects of the Marymede community.

15. TECHNOLOGY SCIENCE CENTRE

The Secondary campus has six well-equipped Science classrooms, used for Science from 7-10 and VCE classes in Biology, Chemistry, Physics and Psychology. In SC09 today there are a variety of activities including making ooblek, building electric circuits and looking at cells through microscopes. There will also be shows in SC08 at 11.30am, 12.30pm and 1.30pm – sparks are sure to fly!

Within this facility, students also access two Food Technology kitchens. Food Technology classes are studied in Secondary School whilst our Primary students have access to this for specialist classes.

On the Primary School side of this facility you will find our Primary Visual Arts classroom, where visitors can discover displays of our students' colourful artwork, join in art activities and chat with staff.

DISPLAYS & ACTIVITIES	
SC08 Science <ul style="list-style-type: none">Science Shows 11.30am, 12.30pm and 1.30pm	SC09 Science <ul style="list-style-type: none">Activities/displays
SC06 Food Technology <ul style="list-style-type: none">Student catered finger food Visit us for a tasty treat!	SC01 Primary Visual Arts <ul style="list-style-type: none">PlastiplayCollagingColouring

16. WURUN COMMON / MULTIPURPOSE CENTRE

Wurun Common

Marymede House System / Pastoral Care

The House framework strengthens the sense of community at Marymede. It provides the structure within which the students serve and support the community and participate in co-curricular activities. Each of the seven Houses embodies the spirit of a patron saint and is a guiding star and constant reminder of the values we uphold.

Every student and staff member at Marymede is a member of one of the seven Houses:

Chanel - St. Peter (orange),
Chisholm - Caroline Chisholm (green)
MacKillop - St Mary MacKillop (teal)
Marcellin - St Marcellin Champagnat (yellow)
McAuley - Catherine McAuley (blue)
McCormack - Sister Irene McCormack (red)
Romero - Oscar Romero (purple)



In the Secondary School House Leaders oversee student wellbeing within the Houses and work with the Directors of Students, Pastoral Teachers, Class Teachers and parents to support the positive engagement of each student.

Each House is broken into 7 Pastoral Groups in a vertical system – students from Year 7 to Year 12 in each group with a House Pastoral Teacher, who meet daily for 15 minutes to provide opportunities for Mentoring, daily support and check ins and building relationships. The Pastoral Teacher is the first point of communication for parents.

MP04 and Wurun Common

Learning Diversity

Our Learning Diversity team works with staff, students and parents to put strategies in place to support the additional needs of our students whether it be academic, social emotional or simply having trouble to adjusting to life at school. Our Learning Diversity Program involves day to day support, targeted programs, and the skills of specialist providers from within the College and external to the College.

PMP Room

Student Wellbeing

On Open Day you will find our Primary Wellbeing staff here ready to chat and discuss the Wellbeing programs at Marymede. Pop in for a chat and chill out with some mindful colouring.

This space is used for a specialist class in Lower Primary – Perceptual Motor Skills Program. Primary students learn co-ordination and balance and learn understanding of language (beside, below, up, down, left, right).

MP01

Primary Performing Arts Room

A dedicated room for Primary Performing Arts. Students experience Music, Drama and other performance activities here, including the DJ Collective.

Wurun Common

Co-curricular Activities

Marymede Catholic College offers an extensive co-curricular program that complements learning and gives all students the opportunity to discover new talents, foster their passions and aspire to achieve excellence outside the classroom.

17. PRIMARY SCHOOL OVAL / MULTIPURPOSE COURTS

These areas are only for Primary school students and are out of bounds to Secondary. The Big Top means that our students are protected from the sun in Summer and the rain in Winter.

ACTIVITIES

- Tennis on the courts under the big top
- Football skills games
- Basketball court games



Open Day Map



Thank you for visiting!

2023 College Tours

If you would like to attend a College Tour with our Principal, Timothy Newcomb, you are warmly invited to visit us again on one of our upcoming College Tours:

- Monday 1 May 9.00am
- Wednesday 7 June 4.00pm
- Monday 17 July 9.00am
- Wednesday 23 August 4.00pm
- Wednesday 4 October 9.00am
- Wednesday 15 November 4.00pm

Visit our website to book online: marymede.vic.edu.au/book_a_tour

For more information please contact Yvonne Smith, Student Enrolment Coordinator:
E: registrar@marymede.vic.edu.au or **T:** 9407 9000





60 Williamsons Road
South Morang, VIC 3752
T: +61 3 9407 9000
E: registrar@marymede.vic.edu.au
www.marymede.vic.edu.au