



## SUSTAINABLE BUILDING MATERIALS

The station's rock walls will use bluestone taken from the project area and native trees will be used for landscaping, creating a range of spaces to enjoy.

Wire baskets filled with local bluestone will be used to clad the station building and for landscape features such as retaining walls and planters. Recycled timber will be used as fencing and for raised planter beds.

All materials will be vandal resistant.

## SAFETY

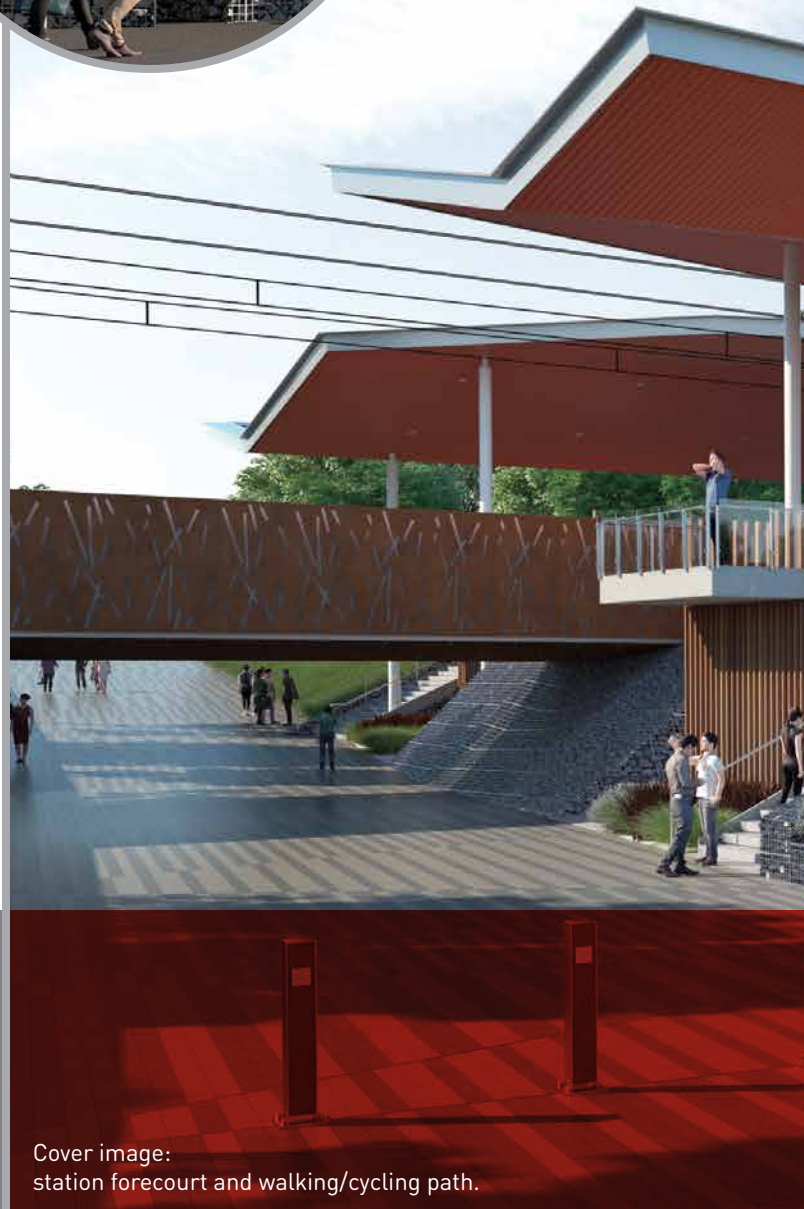
A gradual rise from the street-level footpath will make entering the station safer, with clear views to the entrance. Walls will be designed and placed to maximise visibility from the ramps, stairs and adjacent public space.

Ramps immediately alongside the platforms will have glass barriers for better visibility. Carefully placed lighting and CCTV will help maximise safety. Protective Services Officers will be available every night from 6pm.

## KEEPING YOU INFORMED

Construction will begin in early 2017 and will be completed in 2019.

We'll keep up our conversations with you throughout the construction phase so you can stay up to date with the project's progress and hear about any potential construction works well in advance. This will help you plan your journeys and prepare for any other disruptions.



Cover image:  
station forecourt and walking/cycling path.

## CONTACT US

✉ [merndarail@levelcrossings.vic.gov.au](mailto:merndarail@levelcrossings.vic.gov.au)  
☎ 1800 762 667

Follow us on social media



Translation service

For languages other than English, please call 9280 0780

Please contact us if you would like this information in an accessible format.



THE VICTORIAN GOVERNMENT WILL BUILD THREE STATE OF THE ART STATIONS AS PART OF THE MERNDA RAIL EXTENSION PROJECT.



# MARYMEDE STATION PRECINCT

[levelcrossings.vic.gov.au/merndarail](http://levelcrossings.vic.gov.au/merndarail)

Authorised and published by the Victorian Government, 1 Treasury Place, Melbourne





MARYMEDE STATION —  
VIEW FROM THE SCHOOL

**Built at ground level opposite Marymede Catholic College, Marymede station will provide parking for almost 600 cars and a separate bike storage area that connects directly to a walking and cycling path.**

Using the relaxed feel of a homestead verandah as its inspiration, the design incorporates the station building into a lively public forecourt that will directly connect to the adjacent school and surrounding homes while providing a leafy spot to catch up with friends.

### ARRIVING AT THE STATION

The entry and drop-off points for the estimated 2,000 people who will take the train each day will be made clear by distinct peaks and folds in the station's roofline. These points will be lit at night to create a visible but unobtrusive landmark for the surrounding area.

The station's ramps and stairs will provide easy access for all users. A walking and cycling path will connect new public forecourts on both sides of the station with an extra wide pedestrian underpass.

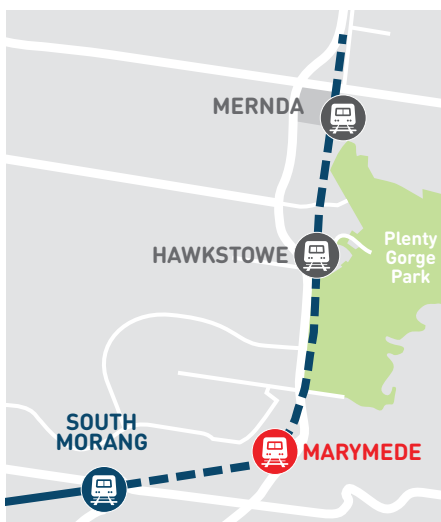
The station design will see the platforms moved to the south to increase the width of the pedestrian underpass and reduce the overall size of the station.

The station will provide universal access for all, which includes the elderly, people travelling with children and people with disability.

### STATION FORECOURT AND CIVIC SPACE

Distinctive paving at the forecourt will highlight the station entrance, and larger native trees will shade seated areas.

Terraced bluestone retaining walls will create a visual link between Marymede College and the station entry. With plenty of places to sit and trees for shade, there will be many spaces to rest and relax as you wait for your train.

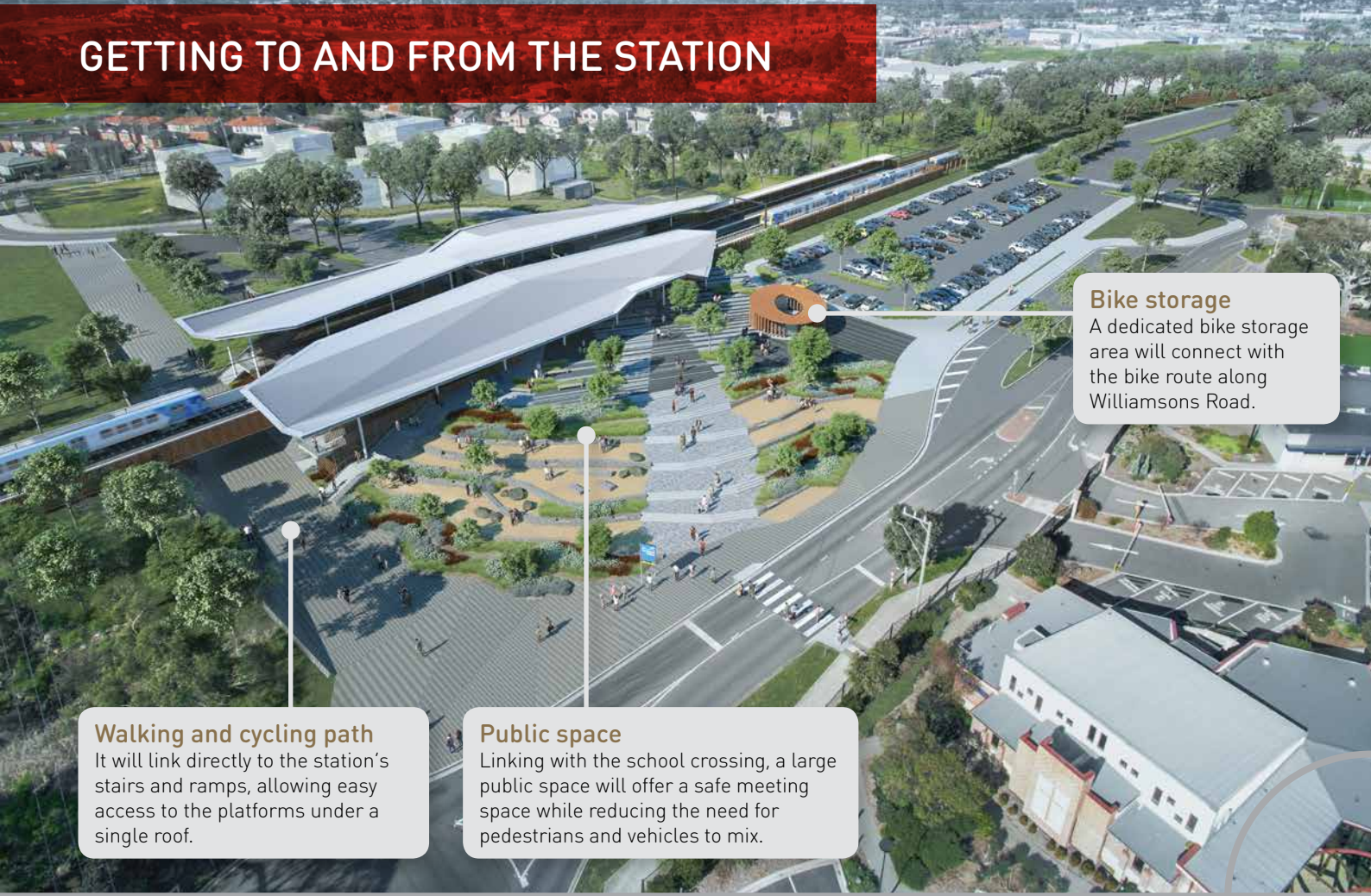


Three new stations will service the local community along the new rail line.



Marymede platform

# GETTING TO AND FROM THE STATION



## Walking and cycling path

It will link directly to the station's stairs and ramps, allowing easy access to the platforms under a single roof.

## Public space

Linking with the school crossing, a large public space will offer a safe meeting space while reducing the need for pedestrians and vehicles to mix.

## Bike storage

A dedicated bike storage area will connect with the bike route along Williamsons Road.

## PLATFORMS

Simple but elegant roof structures will span most of the platforms, offering protection from the elements.

## BICYCLE STORAGE

A separate bike storage area will be built in the public forecourt, with easy access to the walking and cycling path and the station. Recycled timber posts will protect it from the elements.

## DROP OFF

Taxi and 'kiss-and-ride' facilities will be visible from waiting areas so passengers can see their ride.

## PARKING

The station parking includes:

- 550 park-and-ride
- 11 accessible spaces.



Marymede drop off



Bicycle storage